

Data Brief

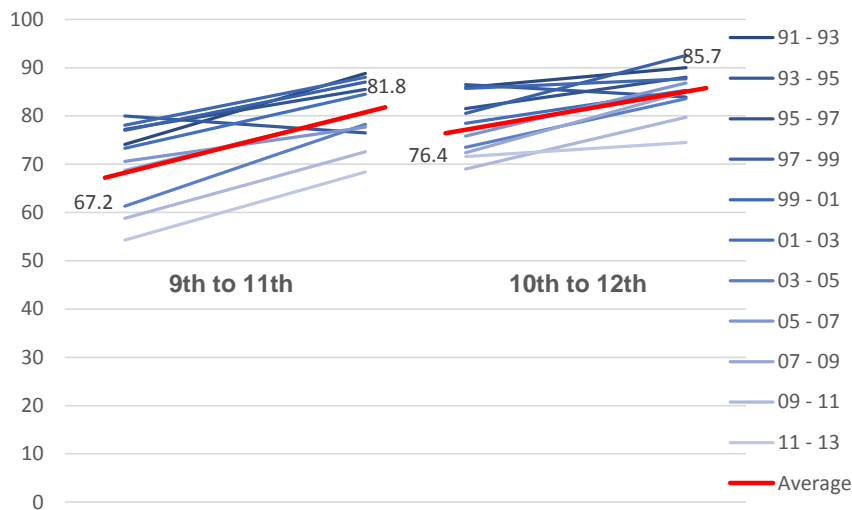
Comparing South Dakota high school cohort alcohol consumption

July 2014, No. 13

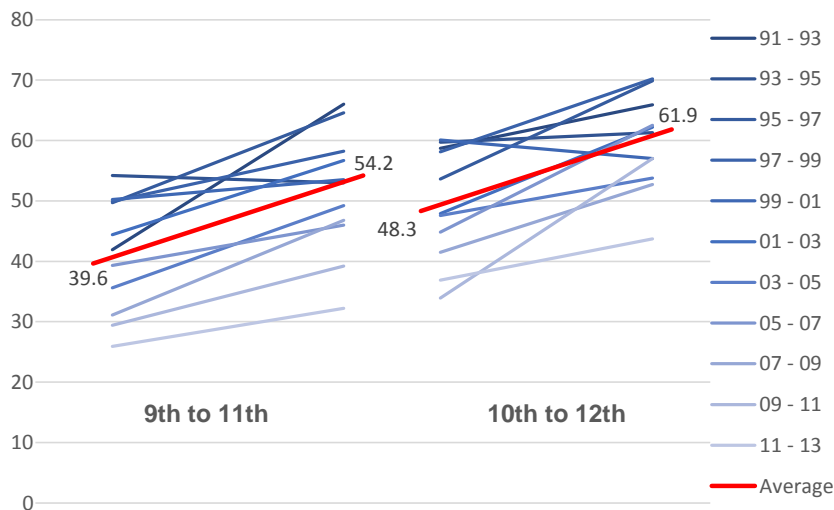
Youth Risk Behavior Surveillance System (YRBSS) statistics are available by grade every two years. Instead of reporting lifetime and 30 day alcohol use by grade each year, trajectories have been plotted for 9th and 10th graders as they are paired with their 11th and 12th counterpart two years later. For example, a blue line below illustrates change in 30 day alcohol use among 9th graders in 2009 with use among 11th graders in 2011. The population of South Dakota 9th graders will become the South Dakota 11th graders in 2011, which is the motivation for this presentation.

The red lines below are the weighted (by sample size) averages of the five blue lines above and/or below. These trajectories suggest approximately a 13% increase in 30 day alcohol use from both 9th to 11th grade

Have you ever had at least one drink of alcohol?



Have you drank alcohol in the past 30 days?



Support for this document and support for the South Dakota Substance Abuse Epidemiological Outcomes Workgroup is made possible by the Center for Substance Abuse Prevention, Substance Abuse Mental Health Services Administration (CSAP-SAMHSA).