



**Data Brief**

**Tobacco use higher in South Dakota, marijuana use lower when compared to United States students**

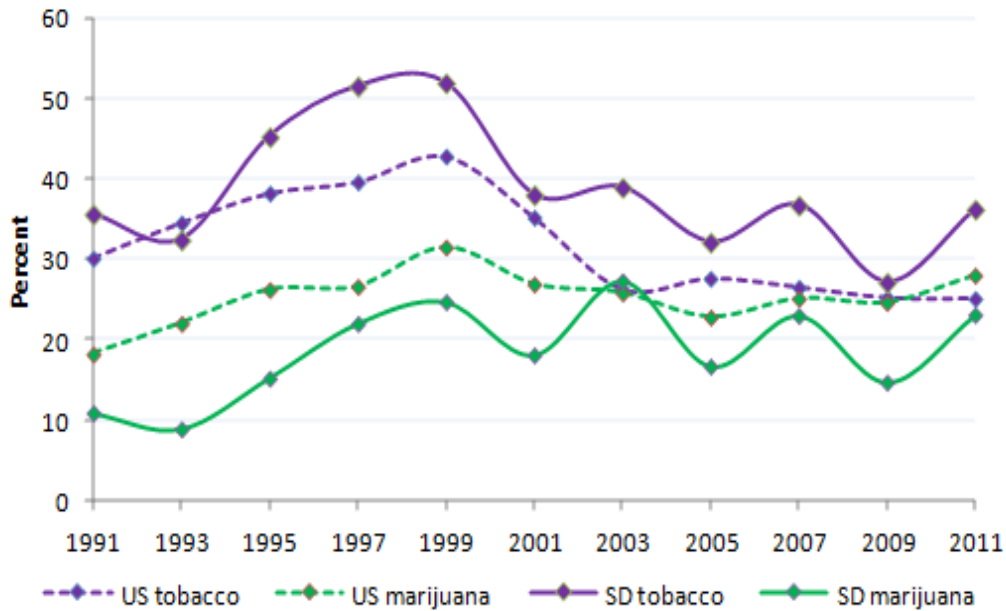
October 2012, No. 5

**Compared to US Students, tobacco use higher by SD students, marijuana use lower**

Tobacco use by South Dakota students exceeds tobacco use by US students and marijuana use among both SD and US students. Tobacco usage by South Dakota 12th grade students is the highest of the four variables, with marijuana usage by SD students as the lowest. Between 1991 and 2011, SD students used tobacco at 30-40%. SD marijuana usage stayed around 10-25%. Marijuana and tobacco usage by students nationwide was about 20-30% with a slight increase of tobacco use prior to 1999 for a limited time. US student usage of both tobacco and marijuana stayed between the higher tobacco and lower marijuana usage by SD students. Usage was recorded for the past 30 day period for 12th grade students. Note: Sample sizes for SD are small with 243 students (2011) and 402 (2009).

**12th Grade Student Marijuana and Tobacco Use  
1991 to 2011, South Dakota and United States  
In Percent**

Year	1991	1993	1995	1997	1999	2001	2003	2005	2007	2009	2011
US tobacco	30.1	34.5	38.2	39.6	42.8	35.2	26.2	27.6	26.5	25.2	25.1
US marijuana	18.2	22.0	26.2	26.6	31.5	26.9	25.8	22.8	25.1	24.6	28.0
SD tobacco	35.6	32.4	45.2	51.5	51.9	38.0	38.9	32.1	36.7	27.1	36.2
SD marijuana	10.9	8.9	15.2	22.0	24.7	18.1	27.3	16.7	23.0	14.7	23.1



Source: "South Dakota 2011 Results." *CDC-Youth Online-High School YRBS*. N.p., n.d. Web. 26 Oct. 2012.  
<http://apps.nccd.cdc.gov/youthonline/App/Results.aspx?LID=SD>.

Support for this document and support for the South Dakota Substance Abuse Epidemiological Outcomes Workgroup is made possible by the Center for Substance Abuse Prevention, Substance Abuse Mental Health Services Administration (CSAP-SAMHSA).