



# Data Brief

## Tobacco use higher in South Dakota, marijuana use lower when compared to United States students

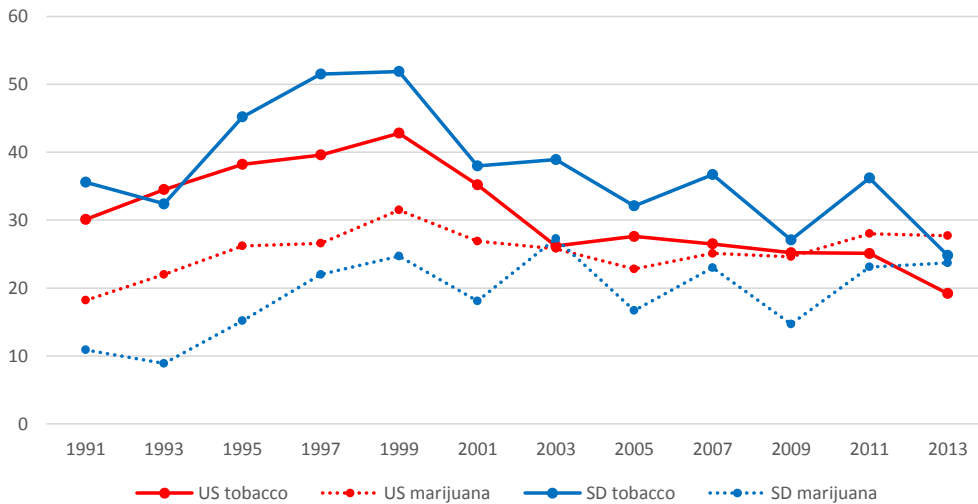
July 2014, No. 5

### Compared to US Students, tobacco use higher by SD students, marijuana use lower

Tobacco use by South Dakota students exceeds tobacco use by US students. Between 1991 and 2011, SD students used tobacco at 30-40%. Tobacco usage by South Dakota 12th grade students dropped significantly since 2011 (over 11%), but is still above the US student percentage. SD marijuana usage stayed around 10-25%. Marijuana and tobacco usage by students nationwide was about 20-30% with a slight increase of tobacco use prior to 1999 for a limited time. US student usage of tobacco reached an all time low (less than 20%), while marijuana usage remained unchanged since 2011. Usage was recorded for the past 30 day period for 12th grade students. Note: Sample sizes for SD are small with 224 students (2013) and 243 (2011).

**12th Grade Student Marijuana and Tobacco 30 Day Use 1991 to 2013, South Dakota and United States In Percent**

Year	1991	1993	1995	1997	1999	2001	2003	2005	2007	2009	2011	2013
<b>US tobacco</b>	30.1	34.5	38.2	39.6	42.8	35.2	26.2	27.6	26.5	25.2	25.1	19.2
<b>US marijuana</b>	18.2	22	26.2	26.6	31.5	26.9	25.8	22.8	25.1	24.6	28	27.7
<b>SD tobacco</b>	35.6	32.4	45.2	51.5	51.9	38	38.9	32.1	36.7	27.1	36.2	24.8
<b>SD marijuana</b>	10.9	8.9	15.2	22	24.7	18.1	27.3	16.7	23	14.7	23.1	23.7



Source: "South Dakota 2013 Results." *CDC-Youth Online-High School YRBS*. N.p., n.d. Web. 15 July 2014. <http://nccd.cdc.gov/YouthOnline/App/Results.aspx?LID=SD>

Support for this document and support for the South Dakota Substance Abuse Epidemiological Outcomes Workgroup is made possible by the Center for Substance Abuse Prevention, Substance Abuse Mental Health Services Administration (CSAP-SAMHSA).