

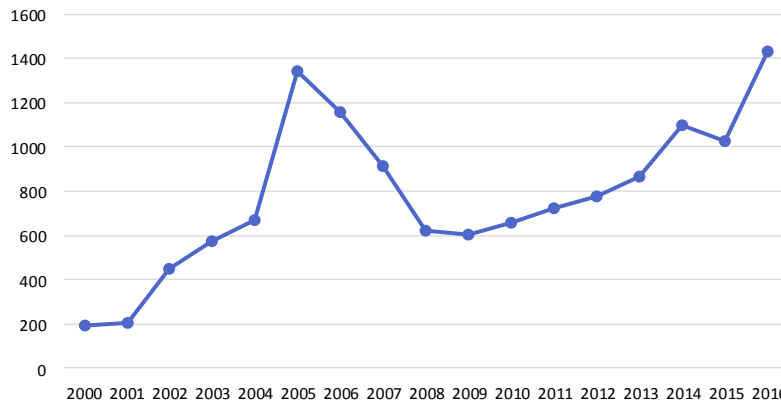


Data Brief Trends in Methamphetamine Treatment Admissions
2000—2016

January 2017

Treatment admissions for clients who identified methamphetamine/amphetamine as the primary substance spiked in 2005 with nearly 1,350 admissions. Primary methamphetamine/amphetamine admissions has risen each year since 2010 with approximately 1,432 methamphetamine/amphetamine treatment admissions occurring in 2016.

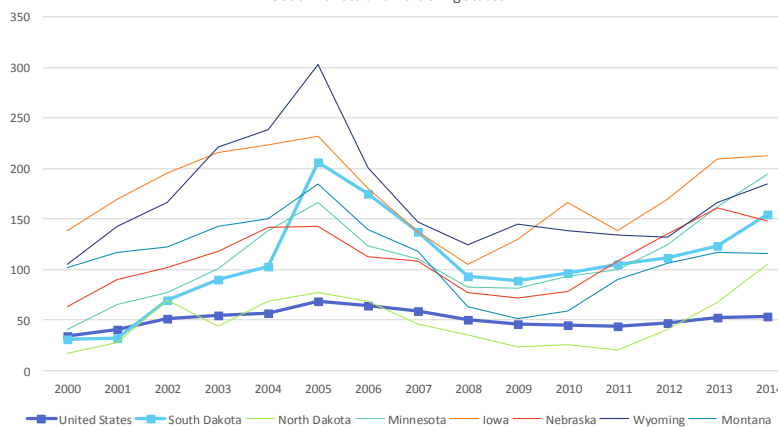
South Dakota Methamphetamine Treatment Admissions



Sources: SAMSHA Treatment Episode Data Set; 2015 and 2016 methamphetamine treatment admissions provided by DSS.

A similar trend is observed in methamphetamine/amphetamine treatment admissions data for states bordering South Dakota. In 2014, South Dakota's methamphetamine/amphetamine treatment admission rate was 155 per 100,000. Iowa had the highest rate in 2014 with 213 per 100,000 followed by Minnesota at 194 per 100,000 and Wyoming at 185 per 100,000. South Dakota and all bordering states exceeded the national average in 2014 of 53 per 100,000.

Primary Methamphetamine/Amphetamine Admissions per 100,000 population
South Dakota and Bordering States



Source: SAMSHA Treatment Episode Data Set: https://www.dasis.samhsa.gov/dasis2/teds_pubs/2014_teds_rpt_st.pdf;

Note: An admission is defined as the formal acceptance of a client into substance abuse treatment, and has occurred if, and only if the client begins treatment.

Support for this document and support for the South Dakota Substance Abuse Epidemiological Outcomes Workgroup is made possible by the Center for Substance Abuse Prevention, Substance Abuse Mental Health Services Administration (CSAP-SAMHSA).